



José Manuel
García Iglesias

Tese de doutoramento

La pintura en Galicia
durante la Edad Moderna:
el siglo XVI

APÉNDICES
FOTOGRAFICOS
VI - VII

Santiago de Compostela, 1978

Arante





























Baamorto





8





























Corbelle, Santa María



Entrambasaugas









Esposende












































ESTA CAPILLA
ES BARCELONA

IN ANNO DOMINI MDCCLXXII
MAY 1772







A close-up photograph of a stone wall. At the top, there is a decorative cornice with three prominent, rounded, rectangular blocks. Below this, the wall is constructed from large, rectangular stone blocks. A central block in the second row from the top has a rectangular inset containing the Latin inscription "ESTA CAPELLA ES PAROQUIA". Below this row is a decorative frieze consisting of several rectangular blocks with intricate, repeating geometric or floral carvings. The bottom portion of the image shows more rows of stone blocks, some of which are dark and appear to be made of a different material or are weathered differently.

ESTA CAPELLA
ES PAROQUIA



Ferreiros





Guilfrei, Santa Baia











Lobas





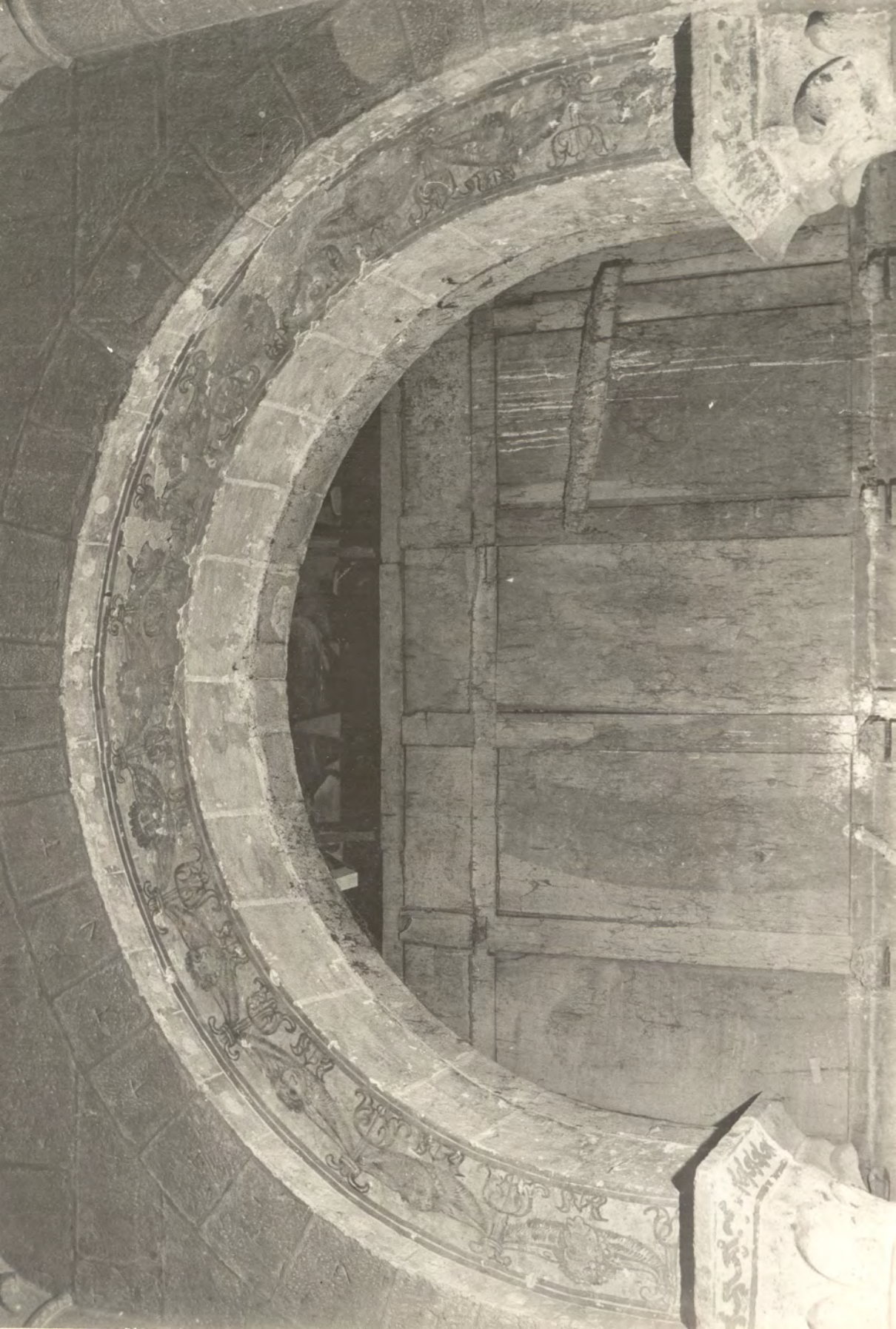


Lugo Catedral Entrada del lado este



Lugo Catedral Murales. Cierre del coro



































1000





















Monforte. San Vicente do Pino

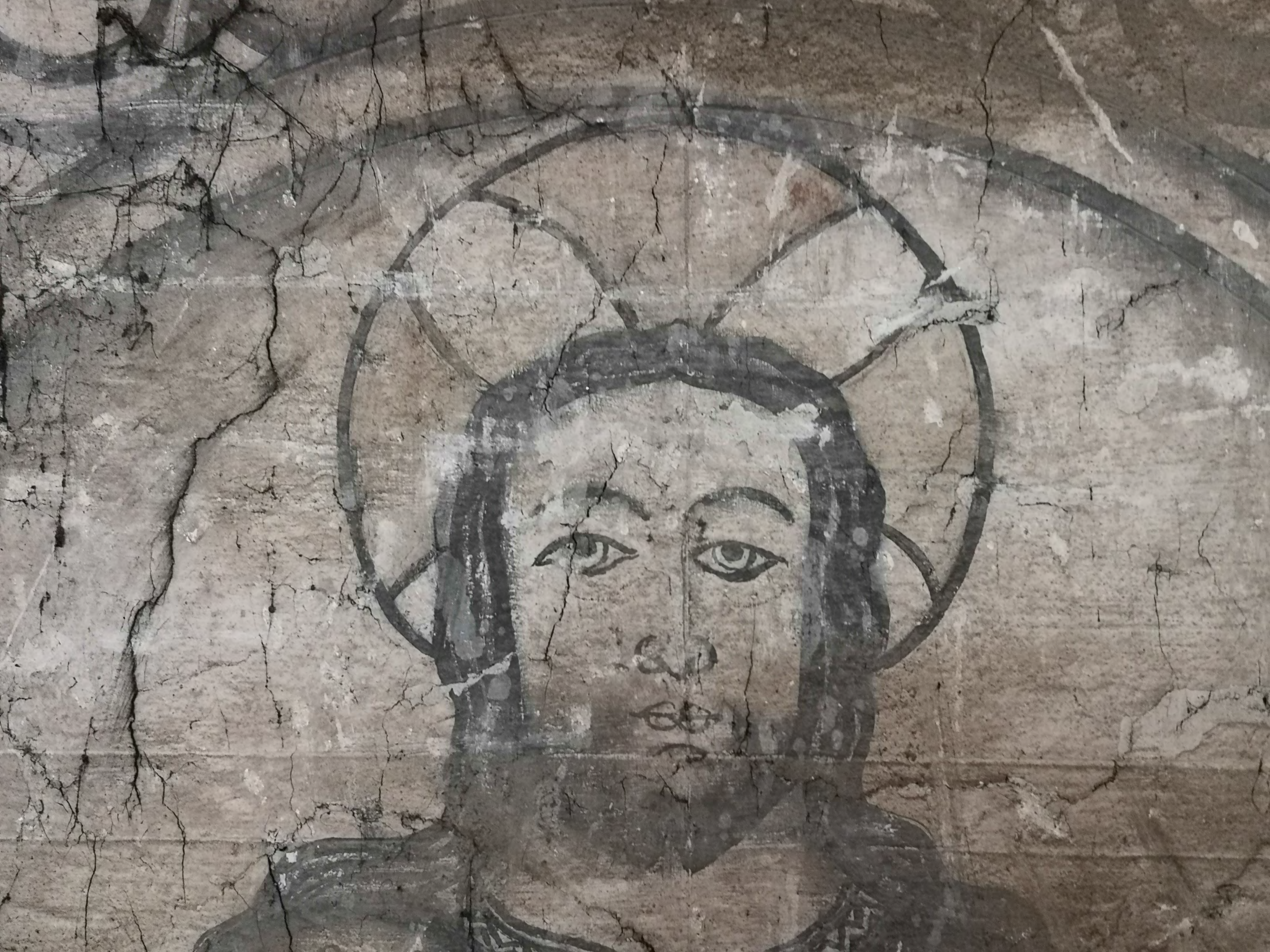












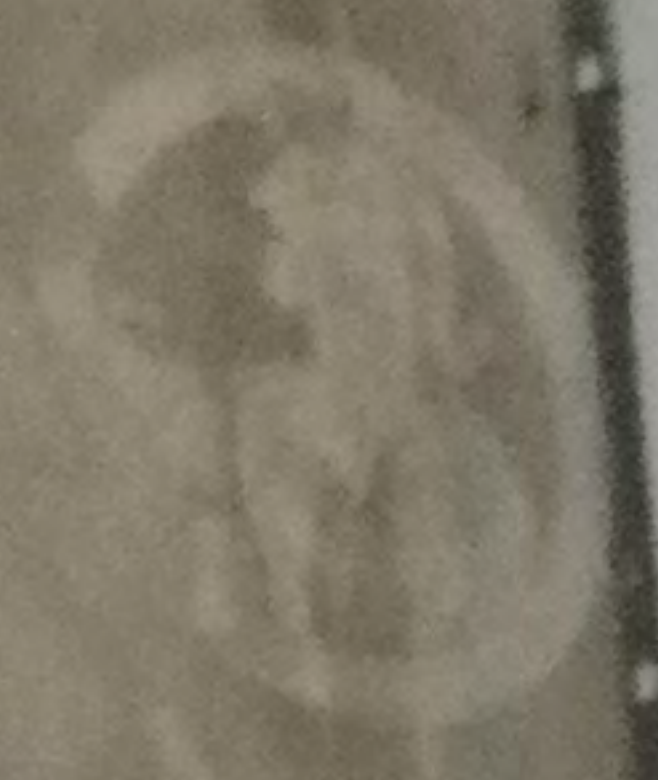
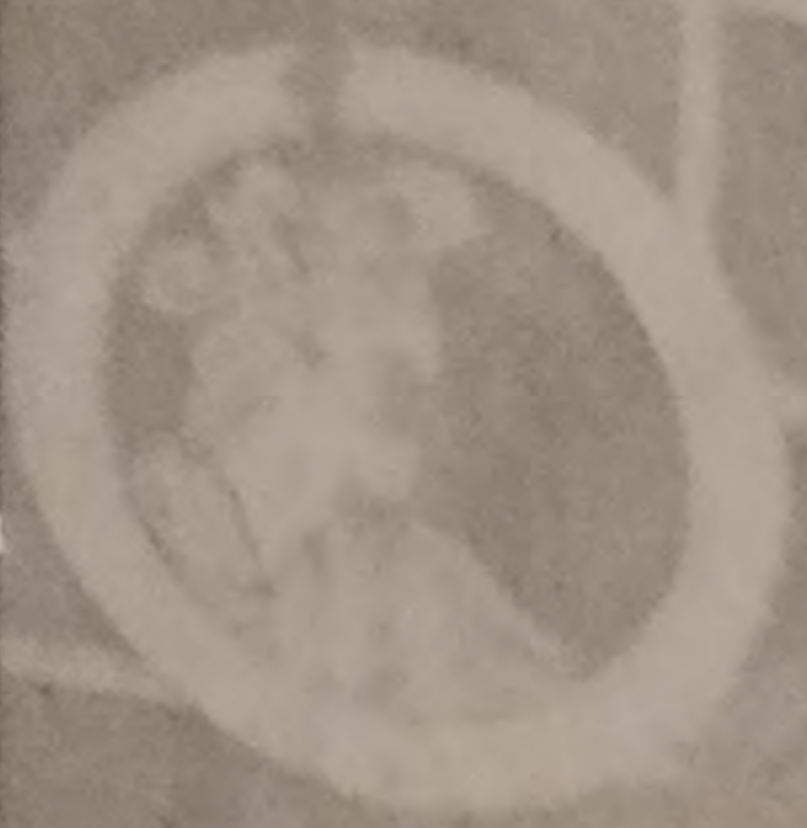






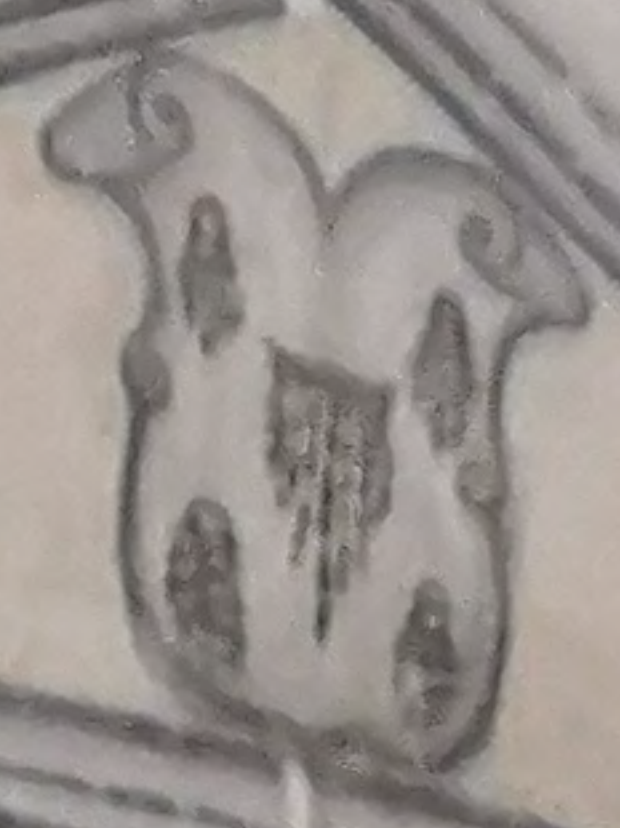


HAC ADITUS PEACATIS



ONES







Oseira





Pinol, San Vicente



Ribas Altas



DE TENNIS
TRISTE FOSSI

ANNO DOMINI
MCCCXXXV
MAY 15
MAY 15
MAY 15





INTELLO
TRISTE POSSI

842

ESTATE
E MORTUUM

ESTATE
E MORTUUM

ESTATE
E MORTUUM







DE TERNI
TRISTE FOSSE

IN TERNI

1515



IN TERNIS
ASSOLITIBUS

18

IN TERNIS

IN TERNIS

IN TERNIS











Riobarba



Sacos, Santa María







MAGISTRA











IN CRUCE

IN CRUCE

IN CRUCE

IN CRUCE

IN CRUCE

IN CRUCE

IN CRUCE









Sanxenxo. San Xés de Padriñan







Sardoma





Tribas









Vilabade







Viveiro. Claustro de San Francisco





VII. Apéndice Edad Moderna

Ribas de Sil, Santa Cristina





















