



José Manuel
García Iglesias

Tese de doutoramento

La pintura en Galicia
durante la Edad Moderna:
el siglo XVI

APÉNDICE
FOTOGRAFICO IV

Santiago de Compostela, 1978

V. Fontecarmoa, San Pedro pp. 1887-1894





















V. Lugo. Catedral Capilla de Santiago pp. 1742-1744



V. Pontedeume, Santiago pp. 1523-1543















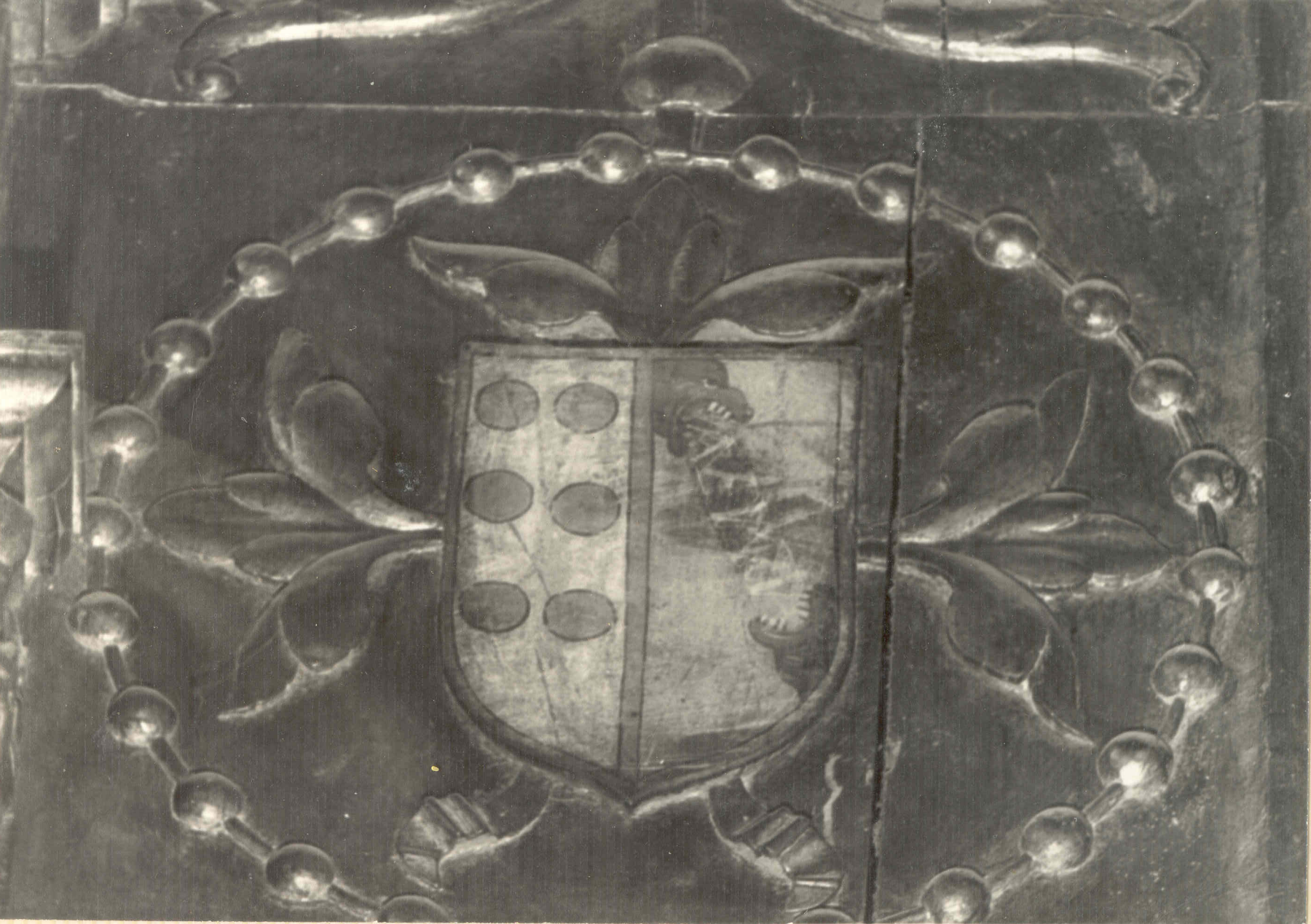








FLANDRIA
1584



V. Pontellas, Santa María pp. 1751-1763





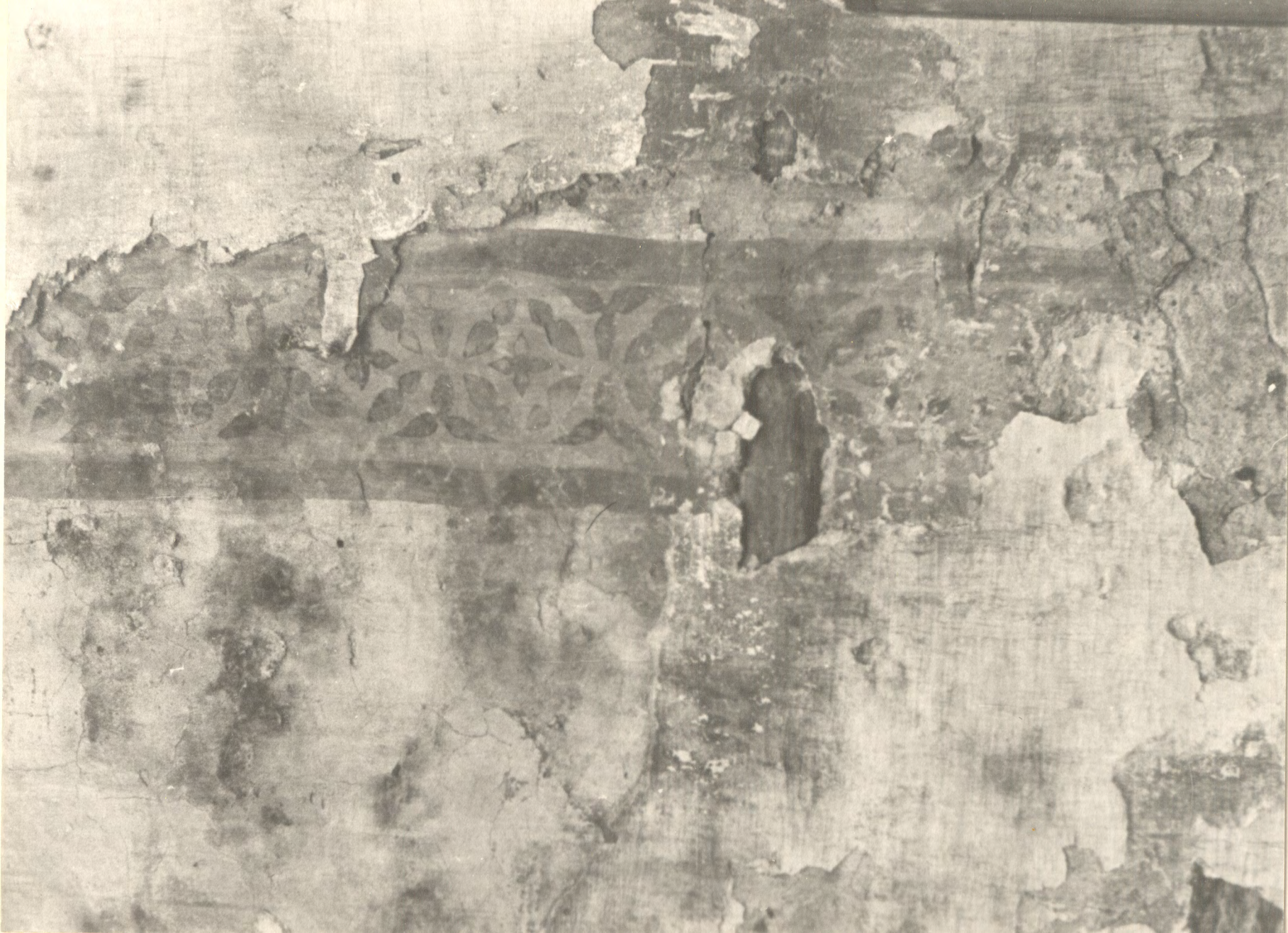












V. Pontevedra, Santa María., pp. 1544-1560















V. Pousada, Santo Estevo pp. 1561-1590

























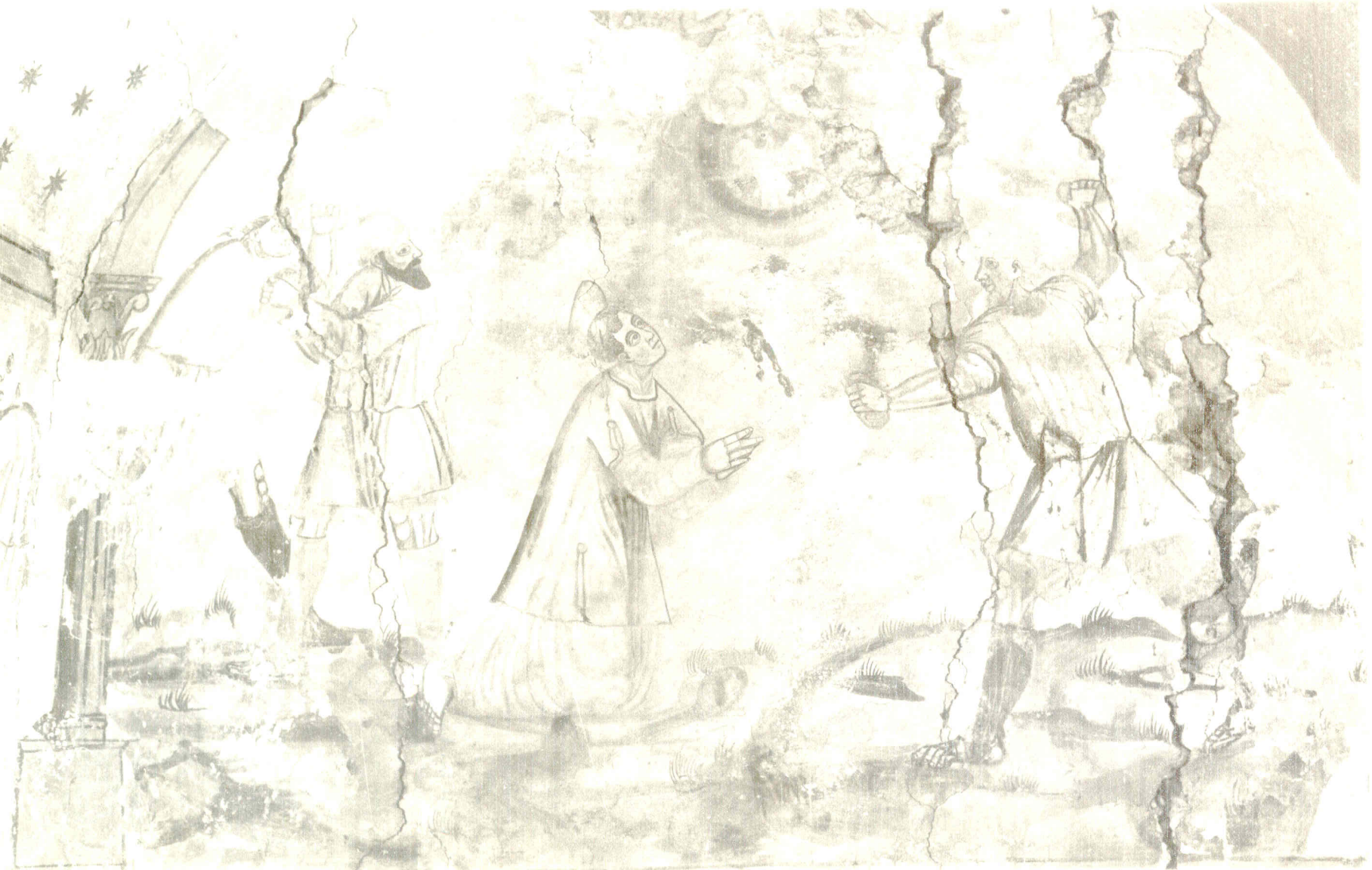




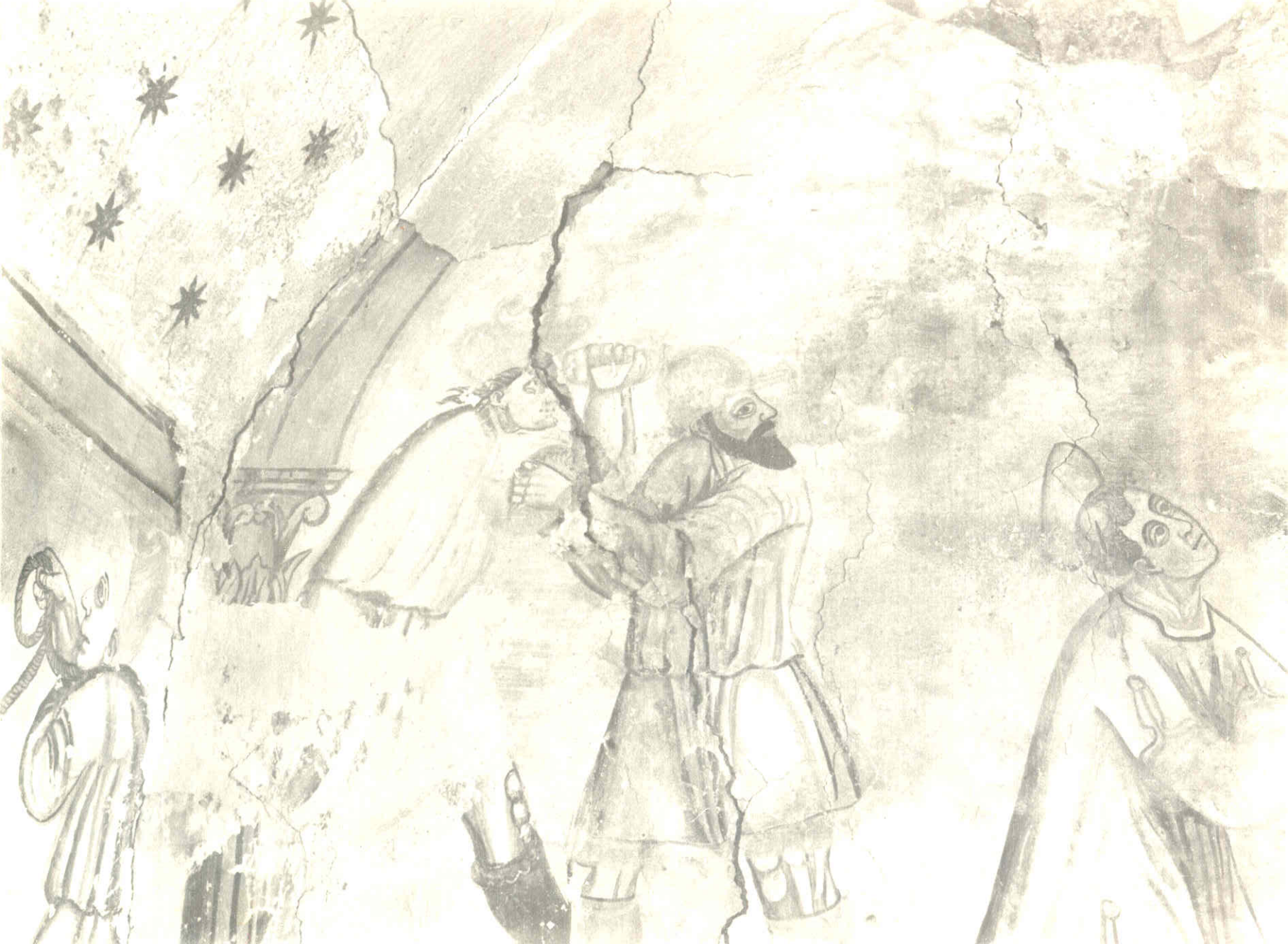


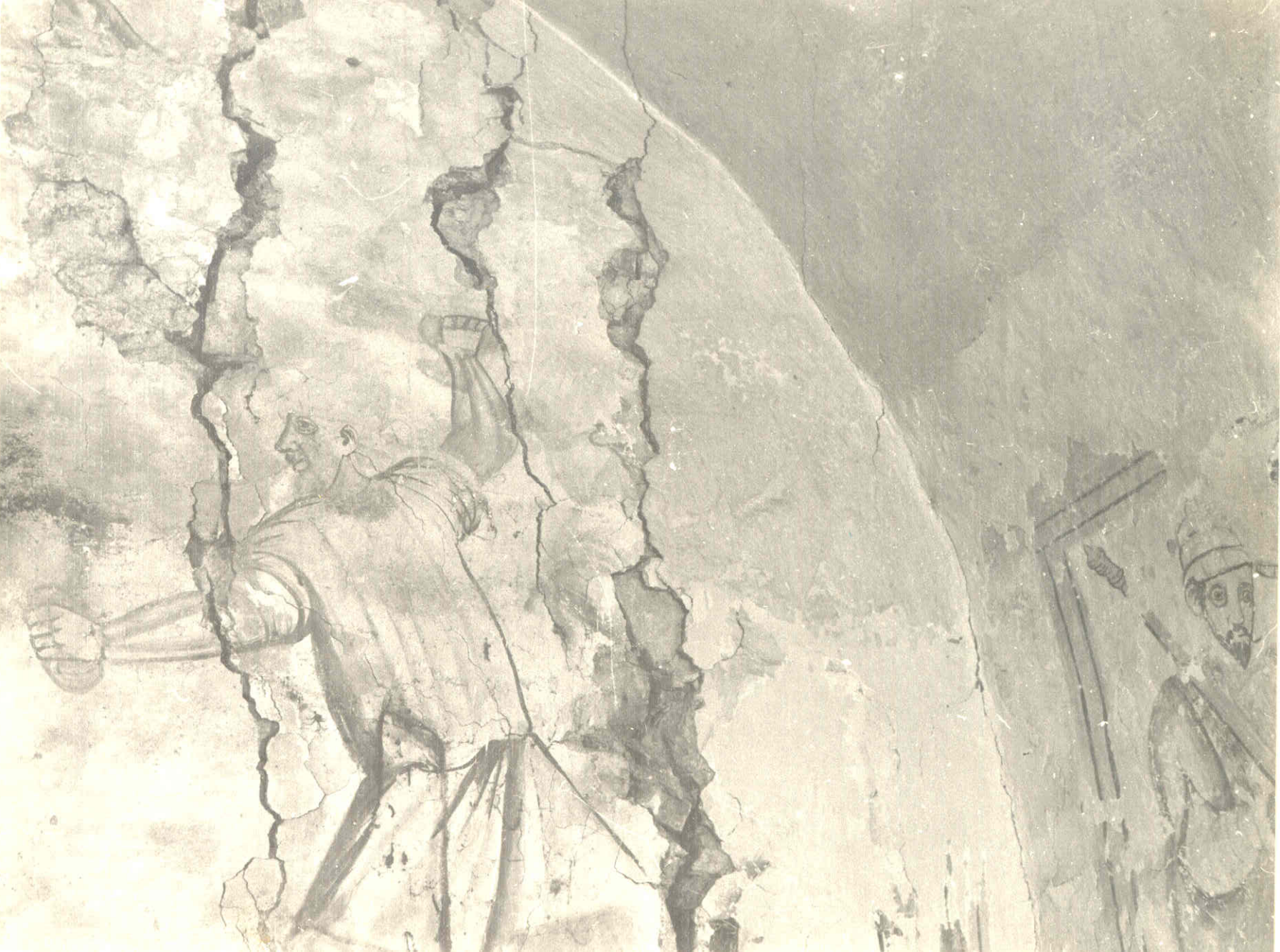
















V. Rebordáns pp. 1591-1603



V. Requeixo, Santiago pp. 1604-1608

SEK FIVE PERSIO AER QVE
MADE FHTOVEDAN SET PERE
SIGIO ADAM QVE COPIA IANBOS
ON TBRAM TAY ELMAIDA



V. Ribas de Sil, Santo Estevo pp. 1609-1624





















V. Rivadulla, Santa Cruz pp. 1625-1629





V. Rivasaltas, San Pedro pp. 1630-1644











VENITE BENEDICTI PA

DETERENNA
TRIS MEI POSSI



TRIS MEI POSSI

TIPA



IN
G
E MORTU
VIBEM

DICCE
DITE MALE
DICTI IUGNE





V. Santiago de Compostela, Orfas pp. 1659-1663



V. Santiago de Compostela, San Bieito pp. 1664-1671









V. Santiago. Catedral. Tabla pp. 1645-1658

























V. Seteventos, San Pedro pp. 1672-1680











V. Soutolongo, Santa María. pp. 1681-1687







